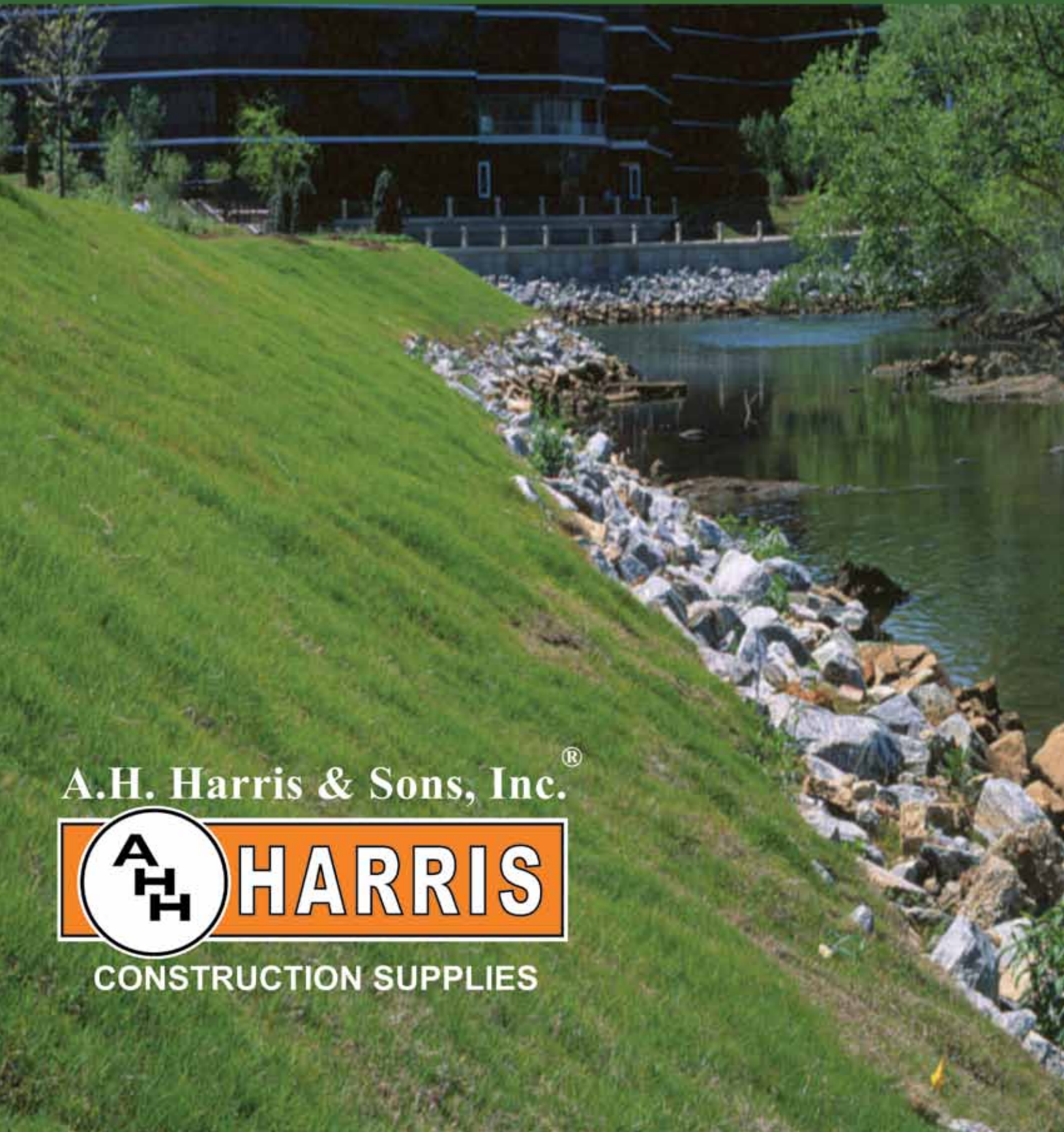


# SITWORK SOLUTIONS



A.H. Harris & Sons, Inc.®



CONSTRUCTION SUPPLIES



1916

**Arthur H Harris** founds a trucking company in New Britain, CT.

1936

The company moves to a larger facility.



Art expands the construction products line.

1950's

The company adds an office in Massachusetts.



Offices in Albany NY and Newark, NJ open in 1969 and the Portsmouth NH office opens in 1979.



1964

Art's four sons - Dick, Bob, Rod and Archie - take over the management of the company.



1980's

Over the years, the company expands its product lines, customer base and market interests.

1993

The Harris brothers sell the company to Bob Parsons and Bob Fisher.



A Division of A.H. Harris & Sons, Inc.

2002

A.H. Harris acquires its rebar fabricating division, HarMac Rebar and Steel Corporation, headquartered in Fryeburg, ME.



2006

A.H. Harris celebrates its 90th anniversary.

# Company Profile

**Today**

the company has 41 locations in 11 states from Maine to North Carolina. A.H. Harris now serves the heavy & highway, commercial, industrial and residential markets specializing in areas of concrete formwork and accessories, concrete repair and restoration, geotextiles and erosion control. A.H. Harris represents some 300 manufacturers and over 3500 products.

## The A.H. Harris Sales Force

### Outside Sales:

Harris Account Managers provide in-depth product knowledge, on-the-job assistance and application advice. Our customers get the right product at the right time with the expert consultation that ensures their projects' success.

### Inside Sales:

Harris inside sales solve problems and answer questions. They give customers up-to-date advice on product usage, availability and options so customers can make the right choice, for the right reasons, every time.

For more information or to contact an A.H. Harris location visit our website:

[www.ahharris.com](http://www.ahharris.com)

**A.H. Harris & Sons, Inc.**



**CONSTRUCTION SUPPLIES**

# CONTENTS

DRAINAGE SYSTEMS .....	2-3
SUBSURFACE DRAINAGE & SOIL SEPARATION.....	4
SOIL STABILIZATION & REINFORCEMENT ..	5-6
TURF REINFORCEMENT MAT .....	6
<b>CREDIT APPLICATION .....</b>	<b>7-10</b>
EROSION CONTROL .....	11-12
TEMPORARY DECKING .....	12
POROUS PAVEMENT.....	12
CALCIUM CHLORIDE.....	12
SLOPE PROTECTION .....	13
SEDIMENT CONTROL .....	14-15
PAVING PRODUCTS .....	16

## INVISIBLE STRUCTURES DRAINCORE<sup>2</sup>

Draincore<sup>2</sup> conveyance layer is used for advanced subsurface and greenroof applications. A replacement for antiquated French drains

Draincore<sup>2</sup> is a high volume drainage layer capable of withstanding heavy loads in direct contact. This drainage core is wrapped in a geotextile fabric, which allows water to enter from any direction, with the rings placed vertically or horizontally. Water can flow between rings in either vertical or lateral directions simultaneously. Flow volumes can be matched with multiple layer configurations. Draincore<sup>2</sup> can distribute water at 42 gallons per minute per foot width, twice the conveyance rate of a pipe and gravel system.



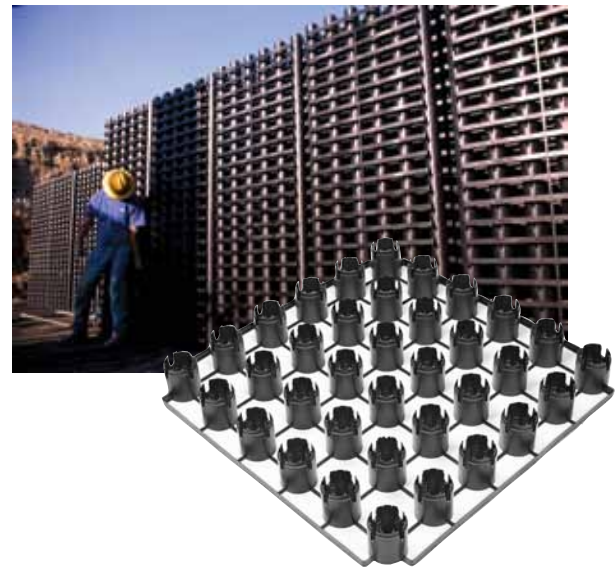
### BENEFITS:

- High conveyance rate - 42 gpm per foot width
- Flexible grid system to fit unusual contours
- Provides insulating air layer from extreme temperatures
- Efficient "void" space for heating or cooling systems
- High compression strength - 2100 psi
- Durable HDPE plastic

## INVISIBLE STRUCTURES RAINSTORE<sup>3</sup>

Rainstore<sup>3</sup> is a plastic structure used to store stormwater underground. Made from injection molded plastic, a single panel contains 36 vertical columns and exceeds H-20 loading, allowing the construction of driving areas, parking lots, or other small structures above the system. Built-in compression fittings allow units to be easily stacked to a variety of depths up to 8'4".

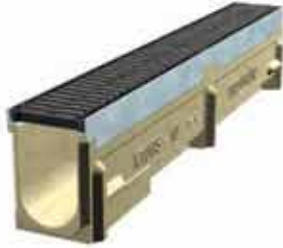
The Rainstore<sup>3</sup> modular system is more efficient at storing and recharging water than arched chambers and corrugated plastic or metal pipe. Rainstore<sup>3</sup> is less expensive than concrete vault chamber.



### BENEFITS:

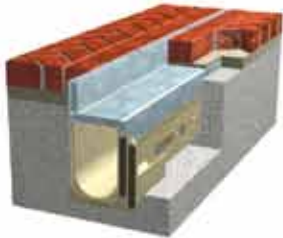
- Allows development of valuable land resources by moving stormwater ponds below ground
- Available pre-assembled in depths from 4" to 8'4"
- 94% open for water storage (250 gal/cubic meter)
- Virtually eliminates stone requirements
- Easy Installation

## ACO DRAIN



### KlassikDrain

General purpose trench drain system available with a wide variety of grates in different materials, slot configurations, and load ratings. KlassikDrain's interconnecting polymer concrete channels feature an integrally cast-in galvanized (K100S) or stainless steel wearing edge rail (KS100S), and come in sloped and neutral depths. A full range of accessories completes the system.



### BrickSlot

Brickslot is a discreet, drainage solution for use with brick or stone pavers. The 3/8" slot blends in with the paving joints giving an aesthetic solution.



### PowerDrain

Heavy duty sloped trench drain system ideal for applications requiring the most rugged product. PowerDrain is available in both 4" (S100K) and 12" (S300K) wide systems and features the patented PowerLok boltless locking system to secure grates. The interconnecting channels feature integrally cast-in ductile iron edge rails.



### FlowDrain

FlowDrain provides an ideal solution to long runs in concrete slabs. The fiberglass channel body with steel frame provides a quick and simple way to create a smooth, corrosion resistant trench drain. A choice of grates in different materials and slot configurations can be secured to the metal frame. FlowDrain is available in 3.75" (FG100) and 8" (FG200) internal widths.



### Polymer Concrete Catch Basins

Series 600 multi-part polymer concrete catch basins are used with KlassikDrain, PowerDrain and ChemDrain. The Type 610 top is used with either a short or deep base. Risers can be inserted between top and base if greater depth is required. A filter bag is available to fit Series 600 catch basins.

## MIRAFI® N SERIES

Mirafi® N-Series nonwoven polypropylene geotextiles are staple fibers used for soil separation and drainage. They combine high durability, along with excellent physical and hydraulic properties. Mirafi® N-Series geotextiles are produced from polypropylene staple fibers and combine high water flow rates and durability while providing excellent soil retention. Mirafi® N-Series geotextiles are used in a wide variety of applications including subsurface drainage and roadway separation applications.

- Easily conforms to ground or trench surfaces for trouble-free installation
- Cost effective
- High permittivity properties allow high water flow while having excellent soil retention
- Chemically stable for use in aggressive environments



## MIRAFI® X SERIES

Mirafi® X-Series woven slit film polypropylene geotextiles provide separation for good subgrades by preventing mixing of subgrade soils and base aggregates.

- Good resistance to installation abuse
- Chemically stable in a wide range of aggressive environments
- Cost effective



## PROPEX GEOTEX WOVEN SLIT FILM GEOTEXTILES

Featuring high tensile strengths and low elongations, our Geotex® woven geotextiles have a remarkable capacity for filtering soils, distributing loads, reducing rutting and extending the life of paved and unpaved roadways. Made from individual yarns woven together to provide dimensionally stable geotextiles, they are resistant to ultraviolet (UV) degradation and to biological and chemical environments normally found in soils. All of our woven geotextiles are backed by decades of in-field performance in everything from separation and filtration to erosion control and waste containment applications.

## PROPEX NONWOVEN GEOTEXTILES

Made from the highest quality polypropylene fibers, our Geotex® nonwoven geotextiles are needlepunched to form a strong fabric that retains its dimensional stability, adding years to the life of any roadway, railroad, landfill or civil/environmental engineering project. Used in subsurface drainage, separation, stabilization, erosion control and cushioning applications, our geotextiles are resistant to ultraviolet (UV) degradation and to biological and chemical environments normally found in soils.

## PROPEX GEOTEX® LIGHTWEIGHT NONWOVENS

The ability of lightweight Geotex® nonwoven needle punched geotextiles to restrict soil particles but allow water to easily pass through makes them perfect for filtration and/or separation applications.

## PROPEX GEOTEX® MEDIUM WEIGHT NONWOVENS

Medium weight Geotex® nonwoven needle punched geotextiles are heavier and stronger for more demanding filtration and/or separation applications where stabilization may be required.

## PROPEX GEOTEX® HEAVY WEIGHT NONWOVENS

Heavy Weight Geotex® nonwoven needle punched geotextiles protect geomembranes from puncture and abrasion. Their thick mass allows lateral transmission of liquids and gas and their strength adds stability to soft, saturated subgrades.

## MIRAFI® BXG BIAXIAL GEOGRIDS

Mirafi® BXG biaxial geogrids are used for base course reinforcement and soil stabilization applications. They offer high strength at low strain and are designed for maximum bearing capacity and shear resistance. Mirafi® BXG geogrids are constructed of high tenacity, high molecular weight woven polyester to deliver increased passive bearing resistance. Coated with a polymer coating, Mirafi® BXG geogrids provide optimum interaction in all soil types.

- Excellent durability and long term performance
- Maximum bearing capacity and shear resistance
- Superior soil confinement
- Cross-roll direction strength when panels sewn together
- Quick installation



## MIRAFI® HP-SERIES WOVEN HIGH-PERFORMANCE POLYPROPYLENE GEOTEXTILES

Mirafi® HP-Series high performance geotextiles are used for base course reinforcement and soil stabilization/reinforcement applications. Produced from high tenacity polypropylene yarns, HP-Series Geotextiles are specifically designed to provide separation, filtration, and reinforcement for moderate to severe site condition. These geotextiles are extremely versatile, ensuring long-term performance in new roadway construction. The combination of high tensile strengths and excellent filtration/separation characteristics make Mirafi® HP-Series geotextiles the complete geosynthetic.

- Weave provides excellent separation factors that control filtration and drainage
- High soil confinement for greater load distribution
- Durable and superior damage resistant
- Cross-roll direction strength when panels sewn together



## TENAX TENDRAIN PRODUCT

Tenax Tendrain is a tri-axial geocomposite that consists of three structural ribs. The top and bottom ribs keep the filter geotextile layer out of the central flow channel, while the center structural ribs provide load bearing and create flow channels. The significantly larger central ribs run parallel to the flow direction, resulting in tremendous hydraulic performance especially for long-term flow requirements under heavy compressive loads.



## TENAX GP

Tenax Heavy Duty Rough Ground Cover provides high puncture resistance for demanding applications. It is ideal under patios, pathways and decking.

- Tenax GP provides a very stable surface, suitable to withstand the loading of cars and lightweight trucks.
- GP is a temporary application.
- The product can be unrolled when needed, and reused for future needs. Tenax GP is ideal for larger areas.



## SYNTEEN SOIL REINFORCEMENT GEOGRID UNIAXIAL GEOGRID

Composed of high molecular weight, high tenacity multifilament polyester yarns that are woven into a stable network placed under tension. The high strength polyester yarns are coated with a PVC material. SF SERIES Geogrids are inert to biological degradation and are resistant to naturally encountered chemicals, alkalis and acids. SF SERIES Geogrids are typically used for soil reinforcement applications such as retaining walls, steepened slopes, embankments, sub-grade stabilization, and embankments over soft soils and waste containment applications.

## SYNTEEN BASE COURSE REINFORCEMENT SUBGRADE IMPROVEMENT BIAXIAL GEOGRID

Composed of high molecular weight, high tenacity multifilament polyester yarns that are woven into a stable network placed under tension. The high strength polyester yarns are coated with a polymer coating. SF Geogrids are inert to biological degradation and are resistant to naturally encountered chemicals, alkalis and acids.



## **AMERICAN EXCELSIOR CURLEX® III**

1.25 lb/yd<sup>2</sup> of 100% Aspen Excelsior Wood Fibers designed to provide protection for grass seed and topsoil from wind and water erosion for approximately 24 months, while simultaneously promoting ideal growing conditions.

## **AMERICAN EXCELSIOR CURLEX® HIGH VELOCITY™ (HV)**

1.62 lb/yd<sup>2</sup> of 100% Aspen Excelsior Wood Fibers designed to provide extended protection for grass seed and topsoil from wind and water erosion for approximately 36+ months, while simultaneously promoting ideal growing conditions on steep, long slopes and/or in channel applications.

## **AMERICAN EXCELSIOR CURLEX® ENFORCER®**

1.25 lb/yd<sup>2</sup> of 100% Aspen Excelsior Wood Fibers designed to provide a fiber service life of approximately 24-36 months, but the remaining components of the product are permanent. It is bound by two layers of extra heavy-duty black UV stabilized netting to provide permanent reinforcement between established vegetation and root systems in channel bottoms or on slopes.



# **TURF REINFORCEMENT MAT**

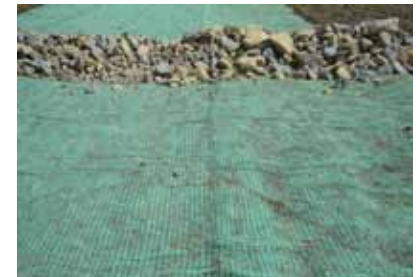
## **PROFILE ENKAMAT**

Enkamat is a three-dimensional nylon Turf Reinforcement Mat (TRM) made of polyamide (nylon) filaments thermally fused at their intersections to create a homogeneous matrix. Ninety-five percent of the matrix is open space, which supplements nature's own erosion control system by reinforcing plant root systems. As the roots grow, they become entwined within the lofty and open Enkamat matrix, creating an extremely stable cover. When fully vegetated, Enkamat can double the effectiveness of natural vegetation and replace hard armor systems at a fraction of the cost.



## **PROFILE ENKAMAT A**

Enkamat A is a heavier and thicker high performance flatback three-dimensional matting made of polyamide monofilaments pre-filled with a bitumen bound mineral filler of 2-5 mm chippings. Enkamat A20 is approximately 22 mm thick and weighs 20 kg/m<sup>2</sup>, with a mat width of 4.8 m. The permanent erosion prevention mat is flexible and permeable and allows vegetation to grow through, thereby minimizing soil runoff and hydrostatic pressure.



## **PROFILE ENKAMAT FLATBACK**

Like their open equivalents, Enkamat flatback has a flexible three-dimensional structure of monofilaments fused together where they cross. The difference lies in the flat back produced from monofilaments in an irregular, two-dimensional structure, integrally bonded to the three-dimensional structure. Enkamat's artificial root system provides the foundations for natural erosion protection. Enkamat flatback can have up to 2,700 m filaments per m<sup>2</sup> of mat, depending on the product type. Using this artificial root system makes it possible to safeguard many bank side areas which could otherwise not be planted.

## **PROPEX PYRAMAT® HIGH PERFORMANCE TURF REINFORCEMENT MATS**

Equipped to handle the most demanding erosion control applications. Patented Pyramat three-dimensional construction makes HPTRMs ten times stronger than traditional TRMs. The 3D matrix of polypropylene yarns features X3® fiber technology which locks in seed and soil for permanent reinforced vegetation. Pyramat's outstanding UV resistance makes it the preferred TRM in arid and semi-arid environments or other applications where soil reinforcement is needed but full vegetation is not expected.

## **AMERICAN EXCELSIOR RECYCLEX® TRM**

Recyclex® Turf Reinforcement Matting (TRM) is a unique, patent pending, permanent, erosion control blanket made from 100% recycled, post consumer goods. Its fibers are made from 100% recycled- "green or brown bottles." Recyclex is made from 100% recycled fibers with 80% or more 5" in length or greater. The fibers are crimped to allow a strong, curled, interlocking matrix. Recyclex fibers have a specific gravity greater than one, meaning the matrix will not float during hydraulic events. Recyclex fibers are stitched together by two strong layers of UV resistant poly propylene netting to form a three dimensional matrix that is designed to provide permanent reinforcement for vegetation and structural root systems.

**A. H. HARRIS & SONS, INC.**

**Application for Credit**

Have you applied for credit with us before?  yes  no Date: \_\_\_\_\_

If yes, under what name \_\_\_\_\_

Firm Name: \_\_\_\_\_ Phone: \_\_\_\_\_

DBA: \_\_\_\_\_

Mailing Address: \_\_\_\_\_ Fax: \_\_\_\_\_

Physical Address: \_\_\_\_\_

City: \_\_\_\_\_ State: \_\_\_\_\_ Zip: \_\_\_\_\_

Type of business (specify): \_\_\_\_\_

Date started: \_\_\_\_\_ Estimated annual sales: \_\_\_\_\_

Please check one  Individual Proprietor  Partnership  Corporation  LLC (Limited Liability Corp.)  
 Member managed corp.

Corporate Federal Tax #: \_\_\_\_\_, Tax Exempt #: \_\_\_\_\_ (include copy)

Additional information required for conditional sales contracts under the Uniform Commercial Code.

Debtor (individual signing contract): \_\_\_\_\_ Title: \_\_\_\_\_

Debtor's Social Security # (for Partnership or individual Proprietor): \_\_\_\_\_

Full name of owner, owners, or authorized officer of Corporation. List home address, zip code and home telephone # for partnership or individual proprietor:

\_\_\_\_\_  
\_\_\_\_\_

**Are you bonded?**  yes  no If yes, provide a copy of each payment bond on a **job-by-job** basis.

Name of Bonding Company: \_\_\_\_\_ Phone: \_\_\_\_\_

Estimated monthly purchases: \$ \_\_\_\_\_ Purchase Order required?  yes\*  no

\* Absence of purchase order number shall not constitute grounds for nonpayment of charges for material received by customer.

**APPLICANTS' SIGNATURE ATTESTS FINANCIAL RESPONSIBILITY, ABILITY AND WILLINGNESS TO PAY OUR INVOICES WITHIN OUR TERMS OF NET 30 DAYS, PAYABLE IN U.S. FUNDS ONLY.**

*All information on this form is for the purpose of obtaining credit, and is warranted to be true. I/We hereby authorize A. H. Harris & Sons, Inc., to whom this application is made, to investigate the references listed pertaining to my/our credit and financial responsibility. Further, I/We recognize that A. H. Harris & Sons, Inc. can seek credit and financial information from other sources than enclosed herein. References to A. H. Harris & Sons, Inc. in this Application for Credit shall be deemed to include A. H. Harris & Sons, Inc., its subsidiaries and other affiliates, and its and their successors and assigns.*

New technology allows the faxing of original invoices. Faxed invoices will not contain all of the terms and conditions detailed herein. These terms and conditions remain in effect until further notice. I/We acknowledge that the acceptance of faxed invoices is acceptance of all the terms and conditions detailed herein .

All delinquent amounts shall be subject to a late charge of one and one half (1-1/2) percent per month until the balance is paid in full. Should any past due amount require outside collection activity, the applicant agrees to pay all costs associated with such collection activity, including reasonable attorneys fees. All checks returned unpaid for any reason shall be subject to a charge of \$25.00. Merchandise cannot be returned without authorization. Transportation charges must be prepaid on all returned goods. Credit will be based on our count and inspection and will be subject to a restocking charge.

**ACKNOWLEDGMENT:** (original, signed application must be forwarded to A. H. Harris & Sons, Inc.)

Firm Name: \_\_\_\_\_

By (please print): \_\_\_\_\_ Title: \_\_\_\_\_

By (signature): \_\_\_\_\_ Title: \_\_\_\_\_

MUST BE SIGNED BY PRINCIPAL OR AUTHORIZED OFFICER

**PLEASE COMPLETE ALL INFORMATION INSIDE THIS FORM**

**FINANCIAL STATEMENT/PERSONAL GUARANTY**

Financial Statement (must be signed) \_\_\_\_\_ Enclosed \_\_\_\_\_ Separate Cover \_\_\_\_\_ N/A

Financial conditions as of \_\_\_\_\_, 20 \_\_\_\_\_

From \_\_\_\_\_ books records \_\_\_\_\_ estimates (please check one)

Cash on hand and in bank _____	Accounts Payable _____
Accounts Receivable _____	Loans, Notes Payable _____
Notes Receivable _____	(portion due within 1 year) _____
Merchandise or inventory _____	Banks _____
Vehicles, machinery & tools _____	Owners/Officers/Relatives _____
Real estate & buildings (VALUE & DESCRIBE BELOW) _____	Install, Loans, secured by equipment _____
Other assets, specify _____	Notes payable banks _____
	(portion due after 1 year) _____
	Real estate mortgages _____
	(describe below) _____
	Other liabilities, specify _____
	Equity (retained earnings) _____
<b>TOTAL ASSETS</b> _____	<b>TOTAL LIABILITIES &amp; EQUITY</b> _____

REAL ESTATE Address/Description	Title In Name of	VALUE Mkt____ Cost____	Mortgage Balance	Mortgage Due Date	Annl./Mo. Payments	Annl./Mo. Income

**PERSONAL GUARANTY**

The undersigned \_\_\_\_\_, residing at \_\_\_\_\_,  
 home telephone number \_\_\_\_\_, social security number \_\_\_\_\_,  
 for and in consideration of A.H. Harris & Sons, Inc. extending credit to (Firm Name) \_\_\_\_\_  
 (hereinafter "the Company"), hereby personally guarantees to pay on demand to A.H. Harris & Sons, Inc. or its authorized  
 agents, any sums due from the Company to A.H. Harris & Sons, Inc., if the Company fails to pay such sums within  
 thirty (30) days of invoicing or demand. The undersigned agrees that this personal guaranty shall be continuing and irrev-  
 ocable, and agrees to hold harmless and indemnify A.H. Harris & Sons, Inc. for all such sums that may come due.  
 The undersigned hereby agrees to the terms contained in the Application for Credit completed on behalf of the Company  
 and consents to any modifications or renewals of the terms of credit between A.H. Harris & Sons, Inc. and the Company.

References to A. H. Harris & Sons, Inc. in this paragraph and the Application for Credit shall be deemed to include A. H.  
 Harris & Sons, Inc., its subsidiaries and other affiliates, and its and their successors and assigns, and the undersigned's  
 personal guaranty shall extend to and include any sums due from the Company to any such party.

DATE: \_\_\_\_\_, 20 \_\_\_\_\_ SIGNATURE: \_\_\_\_\_  
(NO TITLE)

WITNESS: \_\_\_\_\_ SIGNATURE: \_\_\_\_\_  
(NO TITLE)

**REFERENCES**

Name of Bank: \_\_\_\_\_ Contact Name: \_\_\_\_\_

Street Address: \_\_\_\_\_ Account #: \_\_\_\_\_

City: \_\_\_\_\_ State: \_\_\_\_\_ Zip: \_\_\_\_\_ Telephone: \_\_\_\_\_

Former business: \_\_\_\_\_

Location: \_\_\_\_\_ Own or rent building? \_\_\_\_\_

**VENDOR REFERENCES**

Name: \_\_\_\_\_ Phone: \_\_\_\_\_

Address: \_\_\_\_\_ Fax: \_\_\_\_\_

City: \_\_\_\_\_ State: \_\_\_\_\_ Zip: \_\_\_\_\_

Contact: \_\_\_\_\_ Account #: \_\_\_\_\_

Name: \_\_\_\_\_ Phone: \_\_\_\_\_

Address: \_\_\_\_\_ Fax: \_\_\_\_\_

City: \_\_\_\_\_ State: \_\_\_\_\_ Zip: \_\_\_\_\_

Contact: \_\_\_\_\_ Account #: \_\_\_\_\_

Name: \_\_\_\_\_ Phone: \_\_\_\_\_

Address: \_\_\_\_\_ Fax: \_\_\_\_\_

City: \_\_\_\_\_ State: \_\_\_\_\_ Zip: \_\_\_\_\_

Contact: \_\_\_\_\_ Account #: \_\_\_\_\_

**ACCOUNTS PAYABLE INFORMATION**

Does your company require a monthly statement? \_\_\_\_\_ yes \_\_\_\_\_ no

Accounts Payable Contact Name: \_\_\_\_\_ Title: \_\_\_\_\_

**FOR OFFICE USE ONLY**

Credit approval: \_\_\_\_yes \_\_\_\_no

Authorized by: \_\_\_\_\_

Credit limit: \_\_\_\_\_

Accounts#: \_\_\_\_\_ Salesman #: \_\_\_\_\_

Customer class #: \_\_\_\_\_

Date: \_\_\_\_\_

A. Taxes. Prices of the products sold are exclusively of all city, state and federal taxes (other than income taxes), including, without limitation, taxes on the manufacture, sale, delivery, or use of the goods. Buyer agrees to pay Seller the amount of such taxes for which Seller may be responsible for collection or payment, either in its own behalf or that of Buyer, upon Seller's demand. No claimed exemption from taxes will be recognized unless Buyer furnishes Seller an applicable tax exemption certificate.

B. Term of Payment. Unless Buyer has credit approval from Seller, payment in full is due upon delivery. Unless otherwise specifically agreed to in writing by Seller, payment in full on all credit sales is due thirty (30) days from the date of delivery. All checks are accepted subject to collection.

C. Delivery. Unless otherwise specifically provided in the face hereof:  
(1) Delivery shall be made F.O.B. Seller's location specified on the face hereof by delivery of the goods to a carrier for shipment;  
(2) Method and route of shipment are at Seller's discretion;  
(3) In no event shall Seller be liable in connection with shipment nor shall the carrier be deemed to be the agent of the Seller;  
(4) Risk of loss to the goods shall pass to Buyer upon delivery; and  
(5) All transportation charges are to be paid by Buyer.

D. Force Majeure. Seller shall not be liable for its delay in performing or its failure hereunder if such delay or failure is due to act of God, war, fire, strike, differences with workmen, accident, transportation delays, equipment breakdown, governmental acts or requirements, delayed receipt of materials from third parties, or other causes, either similar or dissimilar to the foregoing, beyond Seller's reasonable control.

E. Disclaimer of warranty. EXCEPT AS SET FORTH ON THE FACE HEREOF AND EXCEPT AS OTHERWISE SPECIFICALLY AGREED TO IN WRITING BY SELLER, SELLER MAKES NO REPRESENTATION OR WARRANTY OF ANY OTHER KIND, EXPRESS OR IMPLIED, WITH RESPECT TO THE GOODS, WHETHER AS TO MERCHANTABILITY, FITNESS FOR A PARTICULAR PURPOSE OR ANY OTHER MATTER.

F. Notice of Claims. Immediately upon receipt of the goods, Buyer shall inspect the same. Any claim for shortage must be made within ten (10) days after Buyer's receipt. All other claims, including claims for alleged defective goods, must be made within fifteen (15) days after Buyer learns of the facts upon which such claim is based, but in no event later than thirty (30) days after Buyer's receipt of the goods. All claims not made in writing and received by Seller within the time period specified above shall be deemed waived. With respect to any defects incapable of discovery until in use all claims for any damages or losses as a result of such defects shall be deemed waived unless made in writing and received by Seller within one (1) year after Buyer's receipt of the goods or within fifteen (15) days after Buyer learns of the alleged defect giving rise to the claim, whichever shall first occur, and after the expiration of either of said periods, Buyer expressly assumes all liability for all such damages or losses, irrespective of any use which shall have taken place or whether the alleged defect shall have occurred or been discovered prior to expiration of such periods. The customer acknowledges that it has special skill and knowledge in the selection and use of the equipment and material to be purchased or rented from A.H. Harris and expressly disclaims any reliance upon any statements or representations made or to be made by A.H. Harris regarding the sale, rental, or repair of any material or equipment.

G. Limitation of Liability. BUYER'S EXCLUSIVE REMEDY FOR CLAIMS ARISING HEREUNDER SHALL BE FOR DAMAGES. SELLER'S LIABILITY FOR ANY AND ALL LOSSES AND DAMAGES TO BUYER RESULTING FROM ANY CAUSE WHATSOEVER INCLUDING SELLER'S NEGLIGENCE, ALLEGED DAMAGED OR DEFECTIVE GOODS, IRRESPECTIVE OF WHETHER SUCH DEFECTS ARE DISCOVERABLE OR LATENT, SHALL IN NO EVENT EXCEED THE PURCHASE PRICE OF THE PARTICULAR GOODS WITH RESPECT TO WHICH LOSSES OR DAMAGES ARE CLAIMED, OR, AT THE ELECTION OF THE SELLER, THE REPAIR OR REPLACEMENT OF DEFECTIVE OR DAMAGED GOODS. IN NO EVENT, INCLUDING IN THE CASE OF A CLAIM OF NEGLIGENCE, SHALL SELLER BE LIABLE FOR INCIDENTAL OR CONSEQUENTIAL DAMAGES.

H. Security Interest. Seller reserves a purchase money security interest in each item of the goods listed on the face of the invoice in the amount of their purchase price. Such security interest will be satisfied only by payment in full. Buyer agrees to execute at Seller's request a security agreement and financing statement deemed necessary or desirable by Seller to perfect its security interest in the goods. Nevertheless, a copy of this Agreement may be filed with the appropriate state authorities at any time after signature by the Buyer as financing statement in order to perfect Seller's security interest.

I. Default. In the event any proceedings, voluntary or involuntary, in bankruptcy or insolvency by or against the Buyer, or if Buyer shall be unable to meet its debts as they come due, or in the event of the appointment of a receiver or an assignee for the benefit of creditors of Buyer or in the event Buyer shall fail to pay any amount to Seller when due, or if Buyer shall breach any of its other obligations hereunder, then and in any such event Seller may cancel any unfulfilled part of this Agreement, without liability, and Buyer shall be obligated to Seller for all costs and expenses, including court costs and attorney's fees incurred by Seller in collecting the amount due from Buyer. In any such event Seller shall have all of the rights of a secured party under the Uniform Commercial code. BUYER AND SELLER ACKNOWLEDGE AND AGREE THAT THIS AGREEMENT CONSTITUTES A COMMERCIAL TRANSACTION AND THE BUYER HEREBY WAIVES ANY RIGHT TO NOTICE AND HEARING UNDER APPLICABLE STATE AND FEDERAL LAW WITH RESPECT TO ANY PREJUDGMENT REMEDY WHICH SELLER MAY SEEK TO OBTAIN AGAINST BUYER. The rights and remedies reserved hereunder to Seller are cumulative and in addition to any other or future rights or remedies provided at law or in equity.

J. Entire Agreement. These terms and conditions, together with the matter set forth on the face of the invoice, constitute the entire understanding and agreement of the parties. No changes in or additions to these terms and conditions shall be made except in writing and signed by Seller's and Buyer's authorized representatives.

K. Applicable Law. This Agreement shall be governed by and construed in accordance with the law of the State in which Seller's location specified on the face of the invoice is located.

L. Lease Transactions. If this is a lease transaction, the terms of the lease agreement between Seller and Buyer shall prevail in the event of any conflict between the terms of such lease agreement and the terms of Paragraphs A through K above.

**A.H. HARRIS & SONS, INC.**  
Credit Manager

367 Alumni Road  
Newington, CT 06111  
*Responsible for:* Connecticut, Western Massachusetts, Vermont

860/665-9400  
Fax 860/665-9401

255 West Road  
Portsmouth, NH 03801  
*Responsible for:* New Hampshire & Maine

603/436-3833  
Fax 603/431-8593

10 West Mill Street  
Medfield, MA 02052  
*Responsible for:* Central & Eastern Massachusetts, Rhode Island

508/359-7321  
Fax 508/359-2491

3220 Bordentown Avenue  
Old Bridge, NJ 08857  
*Responsible for:* New Jersey & Metropolitan, NY

800/345-9055  
Fax 732/727-9510

17 Commercial Avenue  
Albany, NY 12205  
*Responsible for:* New York State

518/438-3976  
Fax 518/438-3925

2010 Apperson Drive  
Salem, VA 24153  
*Responsible for:* Virginia

800/468-0155  
Fax 540/776-0044

*except Rockland & Westchester Counties*

Corn Shop Rd.  
Fryeburg, ME 04037



207/935-3531  
Fax 207/935-3058

www.ahharris.com

## MIRAFI® FW WOVEN MONOFILAMENT POLYPROPYLENE GEOTEXTILES

Mirafi® FW-Series geotextiles are made of highly UV stabilized monofilament and multifilament yarns that possess unique physical and hydraulic properties not found in other woven or nonwoven geotextiles. With highly durable strengths, consistent pore sizes, high flow rates, and clog resistance, this product is perfect for shorelines and other erosion control applications. Mirafi® FW-Series geotextiles are used underneath rip rap and concrete revetment systems along inland waterways and coastal shorelines to protect spillways and cut-off drains.



## AMERICAN EXCELSIOR CURLEX® NETFREE™ NATURAL

A 100% biodegradable erosion blanket made of Aspen excelsior wood fiber. Fibers are made into blanket form without the aid of any netting.

## AMERICAN EXCELSIOR CURLEX® EROSION CONTROL BLANKETS

Made of Aspen curled wood excelsior. The top of each blanket is covered with photodegradable or biodegradable netting. Material does not contain any weed seed or chemical additives. Recommended Use: Slopes to 2:1; Channels to 7 ft/s, shear stress to 1.75 lb/ft<sup>2</sup>



Curlex I - Single Netting

Curlex II - Double netting on top and bottom of each blanket

Curlex Natural - Natural in color

Quickgrass - Green in color

FibreNet - 100% biodegradable netting

## AMERICAN EXCELSIOR PREMIER STRAW®

Premier Straw blankets are biodegradable erosion control blankets consisting of the finest straw fibers available. Depending on job site requirements, a variety of Quick Mow™, environmentally sensitive FibreNet™ and stronger netting types are available. At a standard width of 8 feet, which is 18 inches wider than conventional straw blankets, Premier Straw blankets are specifically designed to provide you with the most effective installation widths available. Lightweight and easy to handle, you can rely on AEC Premier Straw to hold its own in the everyday basic blanket applications.

### FEATURES:

- Available with single net on top or netting top and bottom.
- Premier Straw fibers are of consistent thickness and evenly distributed throughout the blanket.
- Premier Straw blankets are certified weed seed free.



## TERRA AQUA GABIONS

Gabions are double twisted hexagonal woven galvanized steel wire mesh compartmented baskets with a rectangular box shape. The compartments or cells are of equal size and dimension and are formed by internal diaphragms being placed within the basket. The compartments or cells are filled with natural stone and the diaphragms minimize stone migration within the basket providing even distribution of the stone fill throughout the basket even after structural movement. Reno Mattresses are gabion baskets with a rectangular mattress shape.

Available in galvanized or PVC coated.



## ACCESSORIES USED IN CONSTRUCTING GABIONS

HOG (C) RINGS

TIGER-TITE FASTENERS

TACT TIES

TIE WIRE 50#

## SPECIAL TOOLS FOR CONSTRUCTING GABIONS

TIGER-TITE FASTENER PLIERS

CORNER CLOSURE TOOL

LID CLOSURE TOOL



## GALVANIZED MESH

For use with Gabions and Gabion Mattresses.

## PROPEX SOIL REINFORCEMENT GEOTEXTILES

Geotex® soil reinforcement geotextiles are specially designed for structural reinforcement in civil and environmental applications. They are woven with high-tenacity polyester and/or polypropylene yarns, and they possess superior hydraulic and strength characteristics. These properties make Geotex geotextiles ideal for reinforcing embankments over soft soils, steepened slopes, retaining walls, lagoon closures and landfill lining systems.



## TRIANGULAR SILT DIKE

Designed as an effective and economical alternative to straw bales, silt fence, rock check dams and etc., the Triangular Silt Dike™ is a barrier systems that contains erosive soils on roadsides, industrial, and commercial construction sites.

### FEATURES:

- The Triangular Silt Dike's innovative patented design provides effective sediment control with fast and easy installation.
- It is made with lightweight and durable materials and weights just 7-9lbs per seven foot section.
- The protective aprons on either side of the barrier prevents both erosion and failure of the structure.
- The aprons are attached to the ground and held in place with U-shaped wire staples, helping the Triangular Silt Dike to conform to rough terrain.



## TEMPORARY DECKING

### INVISIBLE STRUCTURES BEACHRINGS

The Beachrings<sup>2</sup> System has provided access over sand surfaces to all individuals, including the disabled. The new The Beachrings<sup>2</sup> System is manufactured using injection molding for precise size, color, porosity, lighter weight, and lower cost. Rings, ribs, and solid sheet confine sand and prevent it from shifting away under the weight of people, wheelchairs, etc. Sand provides support; a strong plastic surface, which conforms to the ground, provides durability and traction. Rolls provide a boardwalk wide enough for one or two wheelchairs or a platform for special events.



## POROUS PAVEMENT

### INVISIBLE STRUCTURES GRASSPAVE<sup>2</sup>

Grasspave<sup>2</sup> porous paving allows you to park, drive, walk, ride, or lounge on a beautiful grass surface. It performs the functions of pavement, but with the aesthetics of a lawn – all while enhancing the environment.

Grasspave<sup>2</sup> is a structure which provides incredible load bearing strength while protecting vegetation root systems from deadly compaction. High void spaces within the entire cross-section enable excellent root development, and storage capacity for rainfall from storm events. Stormwater is slowed in movement through and across Grasspave<sup>2</sup> surfaces, which deposits suspended sediment and increases time to discharge. Suspended pollutants and moderate amounts of engine oils are consumed by active soil bacteria, which are aided by the system's excellent oxygen exchange capacity.



### INVISIBLE STRUCTURES GRAVELPAVE<sup>2</sup>

Gravelpave<sup>2</sup> porous paving allows you to park, drive, walk, or ride on a beautiful decorative gravel surface.

Gravelpave<sup>2</sup> is a structure to provide heavy load bearing support and true containment of gravel to create a porous surface with unlimited traffic volume and/or duration time for parking. The system can be used for storage and filtration of rainwater. Although bacteria concentrations are lower than with Grasspave<sup>2</sup>, polluted runoff and vehicle drippings are consumed prior to reaching the water table.



## CALCIUM CHLORIDE

### FLAKE

50LBFLAKE 50# bag

### PELLETS

50LBPELLETS 50# bag

## INVISIBLE STRUCTURES SLOPETAME<sup>2</sup>

Slopetame<sup>2</sup> is much more than an erosion control blanket or mat. Slopetame<sup>2</sup> is a permanent three-dimensional reinforcement and stabilization matrix for steep vegetated slopes and channel banks. The integral rings, bars, grid, and fabric act to contain upper root zone soils, allow vegetation roots to easily pass through, and minimize movement and loss by rain or flowing water.

### BENEFITS:

- Interlocked continuous structure across slopes for greater strength
- Strong root matrix in geotextile fabric for additional support
- Fabric backing to reduce chance of undercutting and slow water infiltration
- Lightweight product for easy assembly
- UV-resistant
- High durability and resistance to damage from normal horticultural chemicals

### APPLICATIONS:

- Steep slope erosion control
- Channel bank stabilization
- Channel energy dissipation
- Infiltration trenches
- Vegetated swales and strips



## PROFILE FLEXTERRA FGM

Flexterra is an Engineered Hydraulic Mulch. Flexterra Flexible Growth Medium offers better protection on slopes than rolled erosion control blankets (ECB) and bonded fiber matrix (BFM) products—with the speed and cost of a hydraulically applied product. Flexterra is a flexible growth medium (FGM) made of Thermally Refined™ wood fibers, crimped interlocking fibers, and additives that are engineered to perform under extreme conditions. Flexterra can also be combined with other erosion control technologies to accommodate a broad range of conditions.



## PROFILE GREENARMOR™

The GreenArmor™ System combines engineering and agronomic excellence to extend the boundaries of natural vegetation. This unique system protects against elevated levels of hydraulic lift and shear forces while encouraging turf establishment and long-term root reinforcement, growing denser vegetation, faster in areas where common TRMs have fallen short.

## SILT FENCE GEOTEXTILES

Geotex® silt fence fabrics offer a unique combination of ultraviolet (UV) resistance, strength and hydraulic properties, making them ideal for use in sediment control applications. When attached to wood or metal posts and properly trenched into the soil, silt fence fabrics contain overland flow and filter suspended soil particles from water. This not only allows the water to drain efficiently, it also prevents environmental damage to areas next to construction sites. Plus, as sediment accumulates, the fabric's high tensile strength, UV resistance and low maintenance features ensure continued performance throughout the entire life of the project.



## NATURAL WOOD STAKES

Full 1 x 1 x 48" or 36" natural wood stakes with long 4" pencil points, made locally from native, dense Northern hardwoods – a biodegradable/recyclable product.



## MIRAFI® S-SERIES NONWOVEN POLYPROPYLENE GEOTEXTILES

**For geomembrane liner protection, landfill gas collection, and landfill drainage systems.**

Mirafi® S-Series nonwoven polypropylene geotextiles are made of staple fibers that provide exceptional results due to high tensile strengths and tremendous physical and hydraulic properties.

- Protects the geo-membrane from puncture
- Facilitates the drainage of leachate and gases
- Inert to biological degradation
- Resistant to naturally encountered chemicals, alkalis, and acids
- Composed of polypropylene fibers formed into a stable network to retain their relative position



## AMERICAN EXCELSIOR CURLEX® SEDIMENT LOGS®

Sediment Log consists of an outside, open weave, containment fabric filled with Great Lakes Aspen curled excelsior fibers. Its purpose is to provide a flexible, lightweight, porous, sediment control device demonstrating the ability to conform to terrain details and dissipate water velocity in concentrated flow areas

### TYPICAL APPLICATIONS:

- Ditch bottoms, swales, and waterways
- Over bare soils and/or temporary and turf reinforcement blankets
- Drop structures and let down structures/360 degree protection around catch basins and drop inlet structures
- Curb and drainage outlets
- Project ingress and egress termination points
- As wattles on steep slopes
- Site perimeter control
- Use in place of bales, silt fence, reinforced silt fence, and rock checks



## SILTSACK®

Siltsack® is a sediment control device used during construction that mounts under the grate in catch basins. Siltsack® is made of a permeable geotextile that allows water to pass but prevents silt and sediment from clogging the drain system.

### FEATURES:

- Installs in minutes with U-shaped wire staples
- Conforms to curves and rough terrain
- Can be cleaned and reused
- Regular or high flow



## DIRTBAG®

Dirtbag® geotextile bags are sediment control devices made of permeable, nonwoven geotextiles. Water from ponds, sumps or from holes around construction sites that must be dewatered can be pumped into a Dirtbag®. The Dirtbag® will retain the silt, sand and fines while allowing the filtered water to drain out into the drainage system.



## BULK BAGS

Made of 6.5 oz white woven polypropylene and available in two standard sizes:

14" x 26" w/tie cord, and the bulk sand bag 35" x 35" x 35"

Smaller bags are for ideal for small dikes. The larger size is used for mini coffer dams.



## TURBIDITY CURTAIN

Recommended for construction sites located in protected areas (ponds, shallow lakes, small streams, and marshes) that are exposed only to light winds and to current velocities of less than 1.5 feet per second. Minimum anchorage may be required to maintain perimeter configuration.



## PROPEX PETROTAC 4591

Petrotac® is used for the treatment of local pavement distress such as over joints, crack and potholes. Petrotac has a rubberized asphalt coating with a tackifier allowing the simple peel and stick hand applications. Petrotac is thicker than the Petromat® system allowing it to absorb more stress, making it more appropriate over slightly active joints and cracks. The factory applied rubberized asphalt coating forms a continuous moisture barrier and therefore Petrotac is approved in many states as a bridge deck waterproofing membrane.



## MIRAFI® MPV NONWOVEN ASPHALT OVERLAY PAVING FABRIC

Mirafi® MPV nonwoven asphalt overlay fabric forms a membrane that minimizes surface water from penetrating pavement systems and provides a stress relief interlayer which inhibits the growth of reflective cracks. Produced from polypropylene staple fibers, Mirafi®MPV is heat-set to provide a waterproofing barrier.

- Prevents penetration of surface water into sub-grade soil
- Stress-relieving interface to retard reflective cracking
- Improves fatigue resistance of new overlay
- Well-suited for different grades of tack coat
- Climate-friendly



## MIRAFI® MTK SELF-ADHERING WATERPROOFING MEMBRANE

Mirafi® MTK self-adhering waterproofing membrane is made of rubber, asphalt, and durable polypropylene non-woven reinforcing fabrics that serve as a moisture barrier that resists water permeation or penetration. Its primary use is for asphalt overlay. Mirafi® MTK waterproofing membrane provides long-term reinforcement that extends pavement life.

- Easy and inexpensive installation in varied temperatures
- Reduces structural decay and traffic disruption
- Prevents surface moisture intrusion
- Minimizes reflective cracking by bridging transverse and longitudinal cracks and between dissimilar surface





## Introducing **NEW Curlex CL**

*All Time Proven Benefits of Curlex at a Competitive Price*

- Provides superior performance and vegetation establishment over straw
- New solution to basic single and double net ECB applications
- Unique softly barbed, interlocking, curled, Great Lakes Aspen excelsior fibers
- Naturally seed free
- Designed to promote ideal seed growing conditions
- Simultaneously protects top soil from wind and water erosion
- Designed with built in swell factor – interlock to form strong fiber matrix
- Intimate contact with local terrain
- Water flow follows the curled fiber matrix



**33% more material per roll compared to straw reduces labor and freight costs**

### SIDE BY SIDE COMPARISON

Curlex CL



Single Net Straw

Close-up of Curlex CL Fibers

### TYPICAL APPLICATIONS

- Utility and pipeline right-of-ways
- Highway embankments, ditch bottoms and slopes, bridges, approaches and medians
- Residential, commercial and industrial developments
- Landfill construction
- Urban drainage
- Slope stabilization
- Golf course fairways, roughs, and water ways



# Demand the Best from Your Construction Materials Supplier



**Customer Service**

- Supplies and materials ready for distribution to any site.
- Local, conveniently located Harris stores offer a comprehensive selection of tools and equipment under one roof.
- One of the industry's largest trucking fleets delivers project requirements - without delay.
- Harris engineers use CAD capabilities to create precise, accurate presentations.
- Harris Account Managers provide in-depth product knowledge, on the job assistance and application advice.
- Harris inside sales solve problems and answer questions. They give customers up-to-date advice on product usage, availability and options.



**Well Stocked Showrooms**

For more information or to contact an A.H. Harris location visit our website:

[www.ahharris.com](http://www.ahharris.com)



**Delivery Available**



**Inventory**

**A.H. Harris & Sons, Inc.**



**CONSTRUCTION SUPPLIES**