

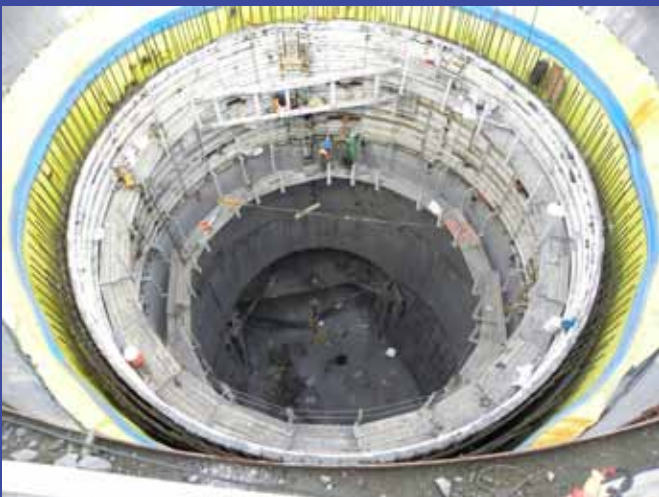


# HARMAC REBAR and STEEL CORPORATION

Fabricators of Reinforcing Steel



- Commercial
- Industrial
- High Rise Buildings
- Heavy Construction Infrastructure Projects
- Complex Precast Applications
- Tilt-Up Projects, Slabs and Walls
- Residential
- Energy



**HARMAC REBAR & STEEL**



**A DIVISION OF A.H. HARRIS**

103 Cornshop Road Fryeburg, ME 04037  
(207)935-3531

301 Hartle Street , Sayreville, NJ 08872  
(732) 651-7822

[www.harmacrebar.com](http://www.harmacrebar.com)

Proud Member of:



# HarMac and Harris. Strength in Numbers.

**41** Harris distribution centers located throughout New England, New York, New Jersey, Maryland, North Carolina and Virginia.

**Value:** We bring our services to **you** - our customers are never far from a Harris location.

**19** of our locations are also steel rebar fabrication centers.

**Value:** Local rebar fabrication can be done for small to midsize jobs, and fabrications to augment larger projects when unexpected changes occur can help keep construction crews working and the project on time and on budget.

**2** full service plants in Fryeburg, ME and in Sayreville, NJ.

**Value:** Production capacity has substantially increased, allowing us to provide more product in a timely manner.

Over **135** employees make up the Harris inside and outside sales force. Account managers provide onsite assistance and the inside sales force provides the information you need to make the right purchase.

**Value:** Having the right product for the job is critical to the success of a project - with up-to-date advice on product usage, availability and options, you can make the right choice, for the right reasons, every time.

Our detailers have over **75** years of combined experience.

**Value:** Our team will provide you with expert level design, detailing & estimating services.

## Fully Fabricated Steel: Increase Productivity, Improve Profitability

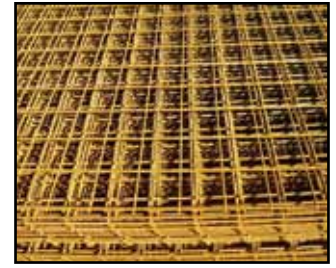
HarMac offers a wide array of products to fill all of your steel needs with **Just One Call**.

- Pier Boots
- Box Culverts
- Columns
- Radius Panels
- Wire Mesh (standard, galvanized and epoxy)
- Reinforcing Steel: Black, Epoxy, Welded, Galvanized, Stainless and Fiberglass
- Accessories (dowel bar subs, anchors, bolts & more)

Standard fabricated bars from basic black bar, galvanized bar or epoxy coated, or pre-fabricated assemblies from A-706 weldable grade reinforcing steel.



**Black Bar**



**Wire Mesh**



**Complex Cages**



**Epoxy Cages**



**High quality welding**



**Rebar mat for tilt up project**



**Slipforming Barrier Wall**

**“This is the first product I have brought into the shop that made the team smile.”**

**Doug Griswold, President  
ST Griswold**



# Make a Connection



**Round and half round cages**



**Square Cages**

## Save Time and Money with Dowel Bar Subs

### Typical Applications:

- Stairways
- Concrete Elevator Shafts
- Ramps
- Pre-determined Deck Walls
- Bridges
- Tunnels
- Parking Garages

### Advantages:

- Increases Productivity
- No Special Tools Required
- Improves Forming Costs for Less Repairs
- Reduces Form Stripping Hassles
- Increases Jobsite Safety
- Strong and Easy to Use
- Meets Engineering Requirements

“ **Michie Corp** has benefited from the welded fabricated cages from manhole products to large tanks, box culverts and jersey barriers. They have allowed Michie to produce more products with less work force. The reinforcing quality is consistent and the cages are job specific and are not over steeled as welded wire mesh sheets are prone to be. ”

**Steve Gard, Precast Division Manager  
Michie Corporation, Inc-Precast Division**



**Vertical Pour Applications**

*The National average cost breakdown for a typical commercial construction project is 78% Labor and 22% Materials.*



## What's in Your Sonotube?

**Save time and money with welded rebar cages**

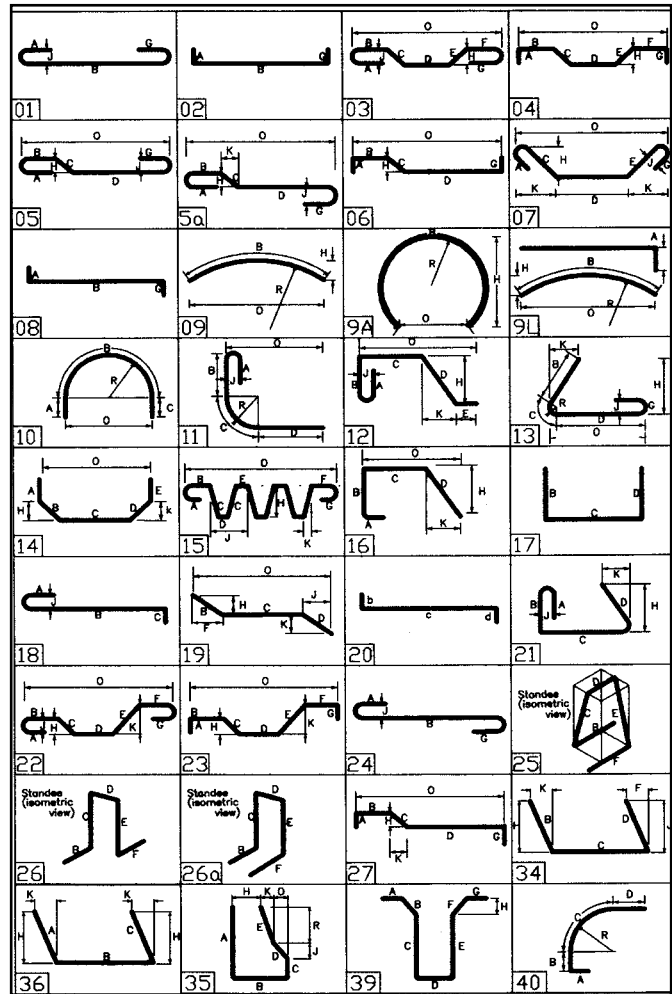
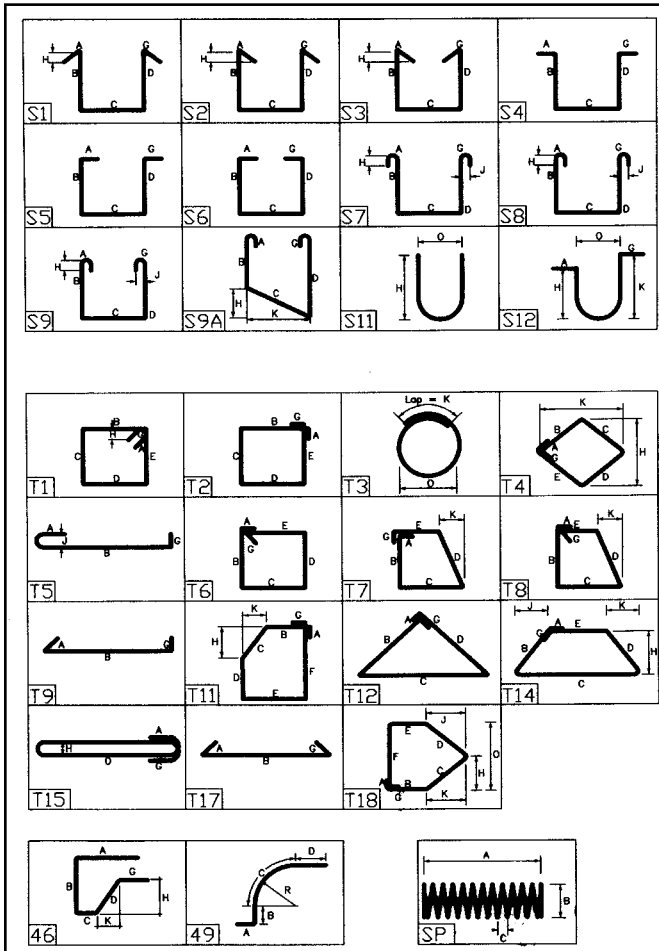
- |                        |               |
|------------------------|---------------|
| Save Time              | Footing Forms |
| Enhance Productivity   | Rebar Cages   |
| Increase Profitability | Spacer Wheels |

“ Our company realized the labor savings before we even poured. If we hadn't purchased fabricated cages, we would have tied up a welder and an assistant and worked weekends to get the product fabricated. We would also have to store the cages and get them from storage to the job site. By purchasing from HarMac we eliminated OT and additional personnel, storage and double handling of the product. ”

**Ducci Electrical Contractors**

# REBAR PRODUCTS

## Standard Bends



## REBAR PRODUCTS

### Bar Sizes

Bar Size Designation Metric/Imperial	Weight Pounds Per Foot	Diameter Inches	Cross- Sectional Area-Sq Inches	Perimeter Inches
#10 / #3	.376	.375	.11	1.178
#13 / #4	.668	.500	.20	1.571
#16 / #5	1.043	.625	.31	1.963
#19 / #6	1.502	.750	.44	2.356
#22 / #7	2.044	.875	.60	2.749
#25 / #8	2.670	1.00	.79	3.142
#29 / #9	3.400	1.128	1.00	3.544
#32 / #10	4.303	1.270	1.27	3.990
#36 / #11	5.313	1.410	1.56	4.430
#43 / #14	7.65	2.25	2.25	1.693
#57 / #18	13.600	2.257	4.00	7.090



## REBAR COUPLER SYSTEMS

- Provide Type 2 splicing capacities (160% Fy) and simplify load paths
- Meet approval from ICC (ESR 2481), ACI, CalTrans, IBC2006, and Ministries of Transportation for Ontario and Quebec
- Approved for use in fatigue applications

### BAR-LOCK COUPLERS

The Bar-Lock Coupler System provides a simple, quick, cost effective method for splicing rebar in tension and/or compression applications. Bar-Lock couplers may be used with plain or deformed bars in sizes #4 through #18.

#### Features:

- Quick and easy to install
- Saves time and money
- Eliminates bar threading and/or special bar end treatment
- No special installation equipment required
- High strength in tension, compression and seismic applications
- Ideal for new construction and rehab projects

**STANDARD COUPLER** is used to join any bar-to-bar connection of the same size, where one bar can be rotated. This simplifies rebar splicing in areas where rebar congestion prevents the use of long lap splices. Engagement of the bar within the coupler is simplified by the taper thread which aids in alignment.

#### Features:

- Used in 80% of all connections
- The compact design of the coupler ensures suitability for use in confined situations where space is restricted or where the loss of cover must be minimized
- Reduces engineering design time

**TRANSITIONAL COUPLER** is used to join two reinforcing bars of different sizes. It is commonly used for economic designs and columns where the diameter of the rebar reduces as the columns extend up the structure.

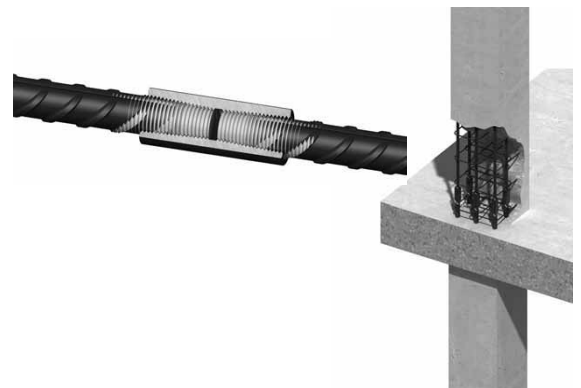
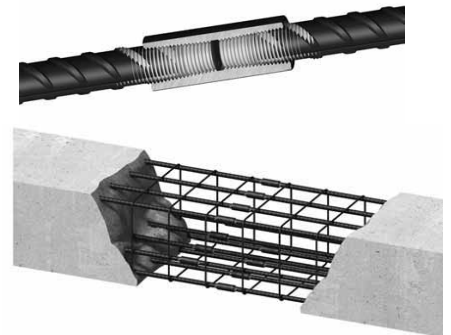
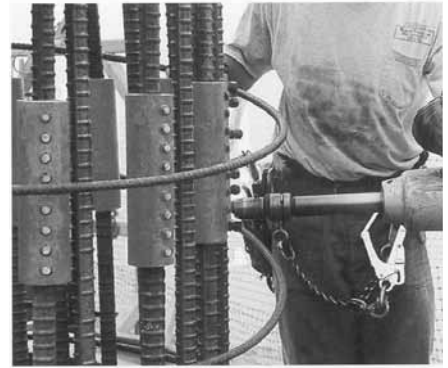
#### Features:

- Eliminates rebar congestion
- Reduces engineering design time
- Allows for the connection of two different size bars

**POSITIONAL COUPLER** is used to join two bars of the same size where neither bar can be rotated. Typical applications are hook bar connections and column to slab connections.

#### Features:

- Eliminates rebar congestion
- Reduces engineering design time
- Rebar never has to be rotated



## REBAR COUPLER SYSTEMS

**FLANGE COUPLER** simplifies the forming process by eliminating the need to cut or drill the formwork. It is used for segmental pours, precast applications, formed applications, and future work applications.

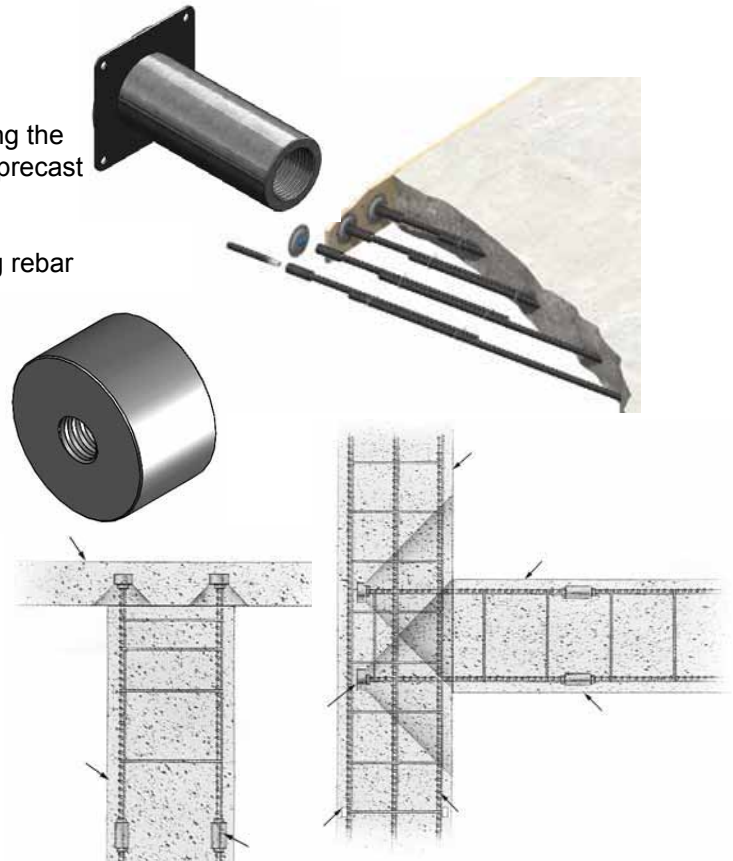
**Features:**

- Provides a safer working environment by eliminating protruding rebar ends through the formwork
- Eliminates the need to cut or drill formwork

**END ANCHOR DISC** simplifies rebar splicing in areas where rebar congestion prevents the use of long lap splices or large diameter hooked rebar. End Anchor Discs can be used for end anchoring, stirrup replacements, continuous splicing, and heavy anchorage of light standards and other signage.

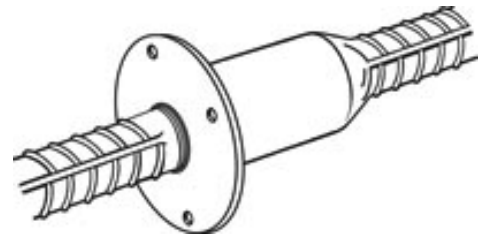
**Features:**

- Eliminates the need for hooked rebar
- Reduces engineering design time

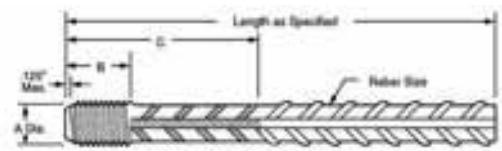


## THREADED SPLICING SYSTEMS

**DOWEL BAR SPLICER SYSTEM** is a two-piece, standard mechanical splicing technique (splicing bars of equal size) that eliminates protruding dowels. Typical applications include splicing reinforcement bars in monolithic structures, rebar anchorages, future expansion, and dowel bar substitution at construction joints. The components of the system, the Splicer and Dowel-In, are manufactured from standard grade 60 rebar material. Basic fabrication consists of forging and threading operations. No welding or machining is required and the threading operation does not reduce the nominal cross-sectional area of the bar. The completed splice (joined Splicer and Dowel-In) obtains ultimate bar strengths and meets or exceeds all existing code requirements including 160%  $f_y$  or 95% of bar actual tensile requirements as identified by ICC acceptance criteria AC 133.



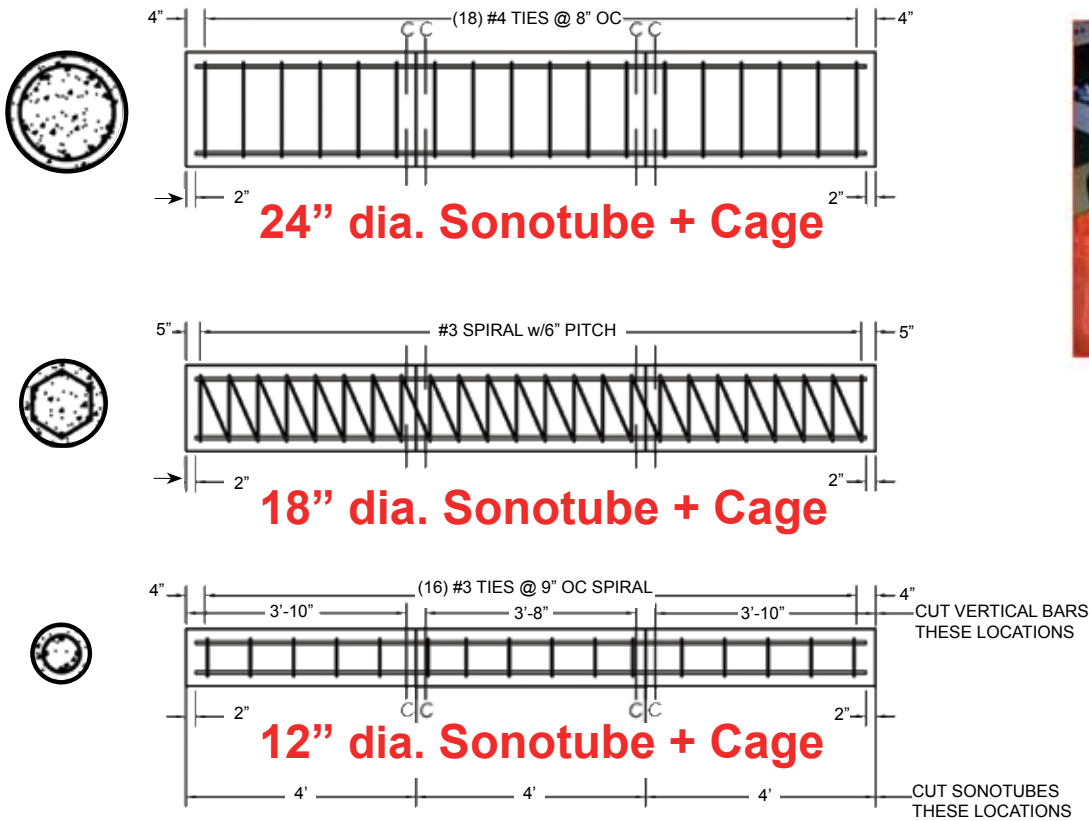
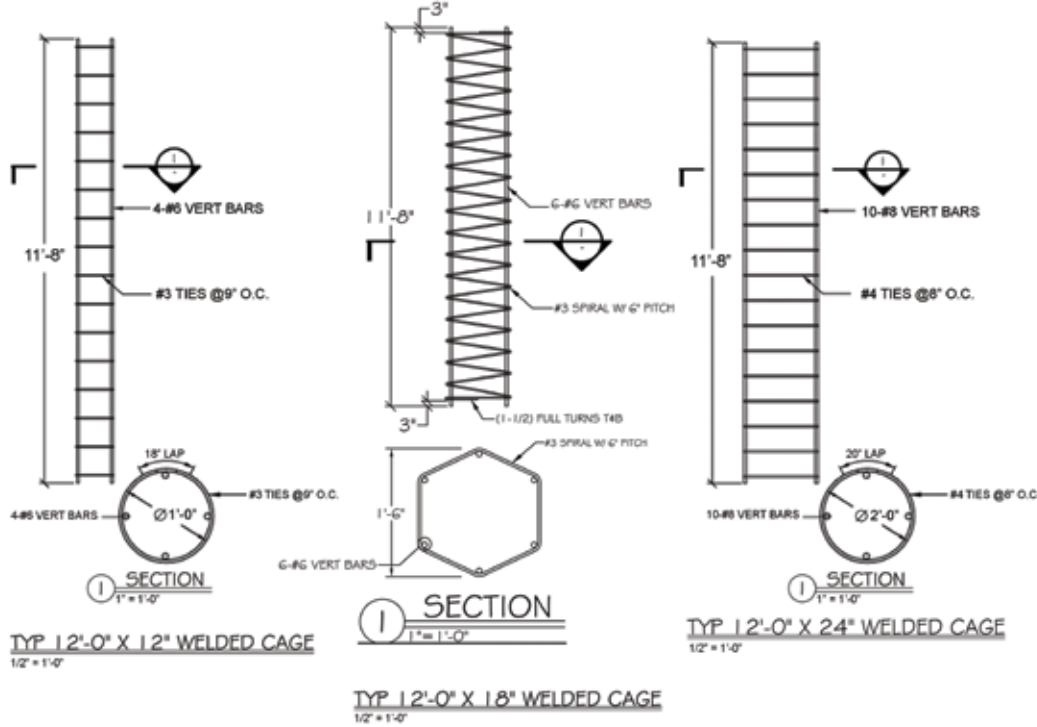
**STANDARD THREADED SPLICE BAR** is manufactured from grade 60 deformed rebar material, with an upsized threaded end that provides the bar with a cross-sectional area greater than the original bar. This ensures that there will be no reduction of bar strength due to the threading operation. The standard Splice Bar is available in sizes #4 through #18 in plain or epoxy coated finish.



Standard Threaded Splice Bar

# REBAR PRODUCTS

## Welded Rebar Cages



## REBAR PRODUCTS

Rebar Cages		
11212	12" DIA X 12'	12LF/PC
3211212K	12" DIA X 12'	12LF/PC
3211204	12" DIA X 4'	4LF/PC
3211204K	12" DIA X 4'	4LF/PC
3211206	12" DIA X 6'	6LF/PC
3211206K	12" DIA X 6'	6LF/PC
3211208	12" DIA X 8'	8LF PC
3211812	18" DIA X 12'	12LF/PC
3211812K	18" DIA X 12'	12LF/PC
3211806	18" DIA X 6'	6LF/PC
3211806K	18" DIA X 6'	6LF/PC
3211808	18" DIA X 8'	8LF/PC
3211808K	18" DIA X 8'	8LF/PC
3212410	24" DIA X 10'	10LF/PC
3212410K	24" DIA X 10'	10LF/PC
3212412	24" DIA X 12'	12LF/PC
3212412K	24" DIA X 12'	12LF/PC
3212406	24" DIA X 6'	6LF/PC
3212408	24" DIA X 8'	8LF/PC
3212408K	24" DIA X 8'	8LF/PC



**Triangular Cages**



**Round Cage**



**Footing Cage**

## HarMac prides itself on *SERVICE* in a prompt and professional manner.

- We know how important it is to meet a schedule and finish on time. We are here to help.
- We maintain strict tolerances that allow you to increase productivity and produce a quality product.
- Estimators and detailers are on staff at HarMac working hard to serve you with accurate estimates and professional drawings.
- Our experienced staff pays strong attention to detail and has a working knowledge unsurpassed in the industry, allowing us to provide problem solving solutions and value engineering recommendations.
- HarMac maintains its own fleet of trucks, allowing us to control and meet delivery requirements.



**Contact the Harris or HarMac location nearest you for more information.**

**CONNECTICUT**

4 Finance Drive  
Danbury  
(203)791-9308  
100 Wheeler Street  
New Haven  
(203)468-9219  
367 Alumni Road  
Newington  
(860)665-9400  
226 Selleck Street  
Stamford  
(203)978-9055  
1112 Hartford Turnpike  
Waterford  
(860)437-7815

**FLORIDA**

1328 West Olive Street  
Lakeland  
(863)683-1546

**MAINE**

22 Leighton Road  
Augusta  
(207)622-0821  
284 Perry Road  
Bangor  
(207)262-6276

**103 Cornshop Road  
Fryeburg  
(207)935-3531**

14 Rainmaker Dr  
Portland  
(207)775-5764

**MARYLAND**

2031 Inverness Avenue  
Baltimore  
(410)525-0480

**MASSACHUSETTS**

425 Dorchester Ave.  
Boston  
(617)269-4800  
42 Holt Road  
Buzzards Bay  
(508)759-9990

323 Meadow Street  
Chicopee  
(413)535-0248

10 W Mill Street  
Medfield  
(508)359-7321

95 Ryan Drive  
Raynham  
(508)884-5070

291 Salem Street  
Woburn  
(781)376-9636

265 SW Cutoff Hwy  
Worcester  
(508)767-0200

**NEW HAMPSHIRE**

900 Candia Road  
Manchester  
(603)644-4970

255 West Road  
Portsmouth  
(603)436-3833

17 Plaza Heights Road Bldg 3  
West Lebanon  
(603)298-6072

**NEW JERSEY**

160 Fairfield Road  
Fairfield  
(973)227-1600

287 Cheesequake Road  
Parlin  
(732)651-0970

**301 Hartle Street  
Sayreville  
(732) 651-7822**

**NEW YORK**

17 Commercial Avenue  
Albany  
(518)438-3976

382 Hamilton Avenue  
Brooklyn  
(718)254-8000

6515 Transit Road  
Buffalo  
(716)686-9123

30 Hill Street  
Massena  
(315)764-0241

63 Trade Road  
Plattsburgh  
(518)561-2525

616 Trolley Blvd  
Rochester  
(585)426-2090

165 Stone Castle Road  
Rock Tavern  
(845)566-4040

6424 E Taft Road  
Syracuse  
(315)452-1080

1000 Saw Mill River Road  
Yonkers  
(914)964-0101

**NORTH CAROLINA**

5900 W WT Harris Blvd  
Charlotte  
(704)921-4420

**RHODE ISLAND**

30 Freeway Drive  
Cranston  
(401)461-8020

**VERMONT**

294 Boyer Circle  
Williston  
(802)863-3302

**VIRGINIA**

2413 Lee Hwy  
Bristol  
(773)642-0451

1215 E Market Street  
Charlottesville  
(434)979-9902

307 E Street  
Hampton  
(757)838-5745

2405 Hermitage Road  
Richmond  
(804)358-7191

2010 Apperson Drive  
Salem  
(800)468-0155



**HARMAC REBAR & STEEL**



**A DIVISION OF A.H. HARRIS**

**103 Cornshop Road Fryeburg, ME 04037**

**(207)935-3531**

**[www.harmacrebar.com](http://www.harmacrebar.com)**